

FREEHOLD



House - Semi-Detached

MODERNISED 2 DOUBLE BEDROOM HOUSE IN DEANSBROOK

Offers In Excess Of

£450,000

FEATURES

- 2 Double bedroom end of terrace family house
- Fantastic condition with recent bathroom and kitchen
- Huge block paved driveway with ample space for several cars
- Large through lounge/living room
- Generous rear garden
- Close to schools/transport/shops



SPACE
RESIDENTIAL

2 Bedroom House - Semi-Detached located in Edgware

Space Residential presents this fabulous 2 double bedroom end-of-terrace family home, located on Deansbrook Road, offered in excellent order with a wonderful bright open living room, a modern fitted kitchen, and a trendy cool shower room.

There is a generous block-paved driveway at the front of the house offering ample parking for several cars and a side access to a private rear garden.

The house has recently been improved throughout, boasting on trend modern colour schemes with grey/white/black accents throughout.

Call us on

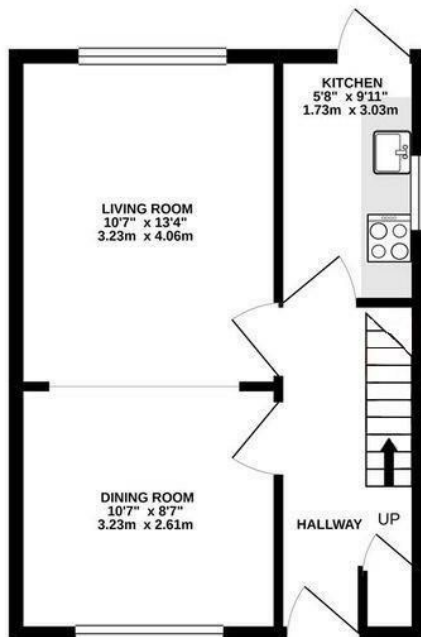
0208 906 2222

info@spaceresidential.com
spaceresidential.com

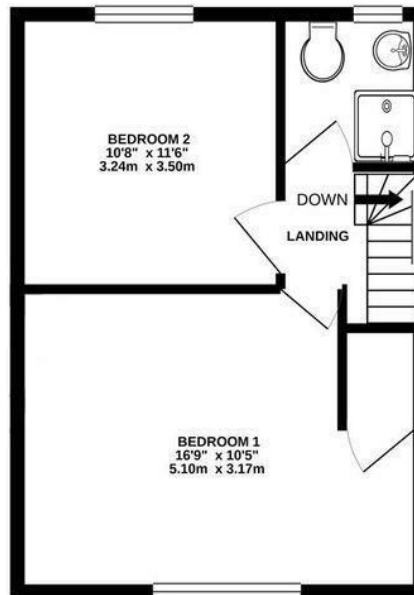
Council Tax Band

C

GROUND FLOOR
379 sq.ft. (35.2 sq.m.) approx.



1ST FLOOR
379 sq.ft. (35.2 sq.m.) approx.



TOTAL FLOOR AREA: 758 sq.ft. (70.4 sq.m.) approx.

Whilst every attempt has been made to ensure the accuracy of the floorplan contained here, measurements of doors, windows, rooms and any other items are approximate and no responsibility is taken for any error, omission or mis-statement. This plan is for illustrative purposes only and should be used as such by any prospective purchaser. The services, systems and appliances shown have not been tested and no guarantee as to their operability or efficiency can be given.
 Made with Metropix ©2020

Energy Efficiency Rating		Current	Potential
<i>Very energy efficient - lower running costs</i>			
(92 plus) A			86
(81-91) B			
(69-80) C			
(55-68) D			
(39-54) E			
(21-38) F		37	
(1-20) G			
<i>Not energy efficient - higher running costs</i>			
England & Wales		EU Directive 2002/91/EC	

Agents Note: Whilst every care has been taken to prepare these particulars, they are for guidance purposes only. All measurements are approximate and are for general guidance purposes only and whilst every care has been taken to ensure their accuracy, they should not be relied upon and potential buyers are advised to recheck the measurements.

